

**SPECIFICATIONS**  
**EB-800F/805F**

<b>MODEL NUMBER</b>	<b>EB-800F</b>	<b>EB-805F</b>
<b>SKU Number</b>	V11H923552	V11H923652
<b>Projection Technology</b>	RGB liquid crystal shutter projection system (3LCD)	
<b>Specifications of Main Parts</b>		
LCD	Size	0.62" (C2Fine)
	Resolution	1080p (1366 x 768 x 2) <sup>1</sup>
<b>Projection Lens</b>		
Type	Focus (Manual) / No Optical Zoom	
F-Number	1.50	
Focal Length	3.90 mm	
Zoom Ratio	1 – 1.35 (Digital Zoom)	
Throw Ratio	0.27 – 0.37 (Wide to Tele)	
<b>Lightsources</b>		
Type	Laser Diode	
Life (Normal / Extended)	20,000 / 30,000 hours	
<b>Screen Size (Projected Distance)</b>		
Zoom: Wide	65" – 130" [39.2 – 80.3 cm] @ 16:9 / 61" – 120" [39.5 – 79.6 cm] @ 16:6	
Zoom: Tele	48" – 96" [39.2 – 80.3 cm] @ 16:9	
Standard	80" [48.7 cm]	
<b>Brightness<sup>1</sup></b>		
White Light Output (Normal / Extended)	5,000 lm / 3,500 lm	
Colour Light Output (Normal / Extended)	5,000 lm / 3,500 lm	
<b>Contrast Ratio</b>		
	Over 2,500,000:1	
<b>Internal Speaker(s)</b>		
Sound Output	8W x 8W [Stereo]	
<b>Geometric Correction</b>		
Vertical / Horizontal Keystone	±3° / ±3°	
Quick Corner	Yes	
<b>Connectivity</b>		
Analog Input	D-Sub 15Pin	2
	Composite	RCA x 1 (Yellow)
Digital Input	HDMI	3 (HDCP2.3)
	HDBaseT	1 (HDCP2.3)
Output Terminal	D-Sub 15Pin	1 (Black)
	HDMI	1
Audio Input	Stereo Mini Jack	3
Audio Output	Stereo Mini Jack	1
Control I/O	RS-232C	D-Sub 9pin x 1
USB I/O	Type A	2 (for Saving and Reading* data via USB Memory, USB Document Camera)
	Type B	1 (for USB Display, mouse, K/B, Control, Firmware Update, Interactive, Copy OSD Settings)
Network	Wired LAN	RJ45 x 1
	Wireless LAN	1 x USB Type A (In common with Memory I/O)
<b>Wireless Specification</b>		
Supported Speed For Each Mode	Infrastructure: IEEE 802.11b (2.4GHz): 11 Mbps <sup>2</sup> , IEEE 802.11g (2.4GHz): 54 Mbps <sup>2</sup> , IEEE 802.11n (2.4GHz): 72.2 Mbps <sup>2</sup> , IEEE 802.11a (5GHz): 54 Mbps <sup>2</sup> , IEEE 802.11n (5GHz): 150 Mbps <sup>2</sup> , IEEE 802.11ac (5GHz): 325 Mbps <sup>2</sup> Access Point (Wi-Fi Direct): IEEE 802.11g (2.4GHz): 54 Mbps <sup>2</sup> , IEEE 802.11n (2.4GHz): 72.2 Mbps <sup>2</sup> , IEEE 802.11a (5GHz): 54 Mbps <sup>2</sup> , IEEE 802.11n (5GHz): 150 Mbps <sup>2</sup> , IEEE 802.11ac (5GHz): 325 Mbps <sup>2</sup>	
Supported Mode	Infrastructure, Access Point (Wi-Fi Direct)	
Wireless LAN Security	Infrastructure: OPEN, WPA2/WPA3-PSK, WPA2/WPA3-EAP Supported EAP Type: PEAP, PEAP-TLS, EAP-TLS, EAP-Fast Access Point (Wi-Fi Direct): WPA2-PSK(AES)	
<b>Operating Temperature</b>		
(Base on low altitude)	Single use: 0 - 45 °C <41 - 113 °F> [20% – 80% Humidity, No Condensation] Multi Projection use: 0 - 40 °C <41 - 104 °F> [20% – 80% Humidity, No Condensation]	
<b>Operating Altitude</b>		
	0 - 3,048 m <0 - 10,000 ft> (over 1,500m / 4,921 ft: with High altitude mode)	
<b>Direct Power On / Off</b>		
	Yes	
<b>Start-Up Period</b>		
	Less than 8 - 10 seconds (Epson Logo), Warm-up Period: 30 seconds	
<b>Cool Down Period</b>		
	Instant Off	
<b>Air Filter</b>		
Maintenance Cycle	20,000 hours <sup>3</sup>	
<b>Power Supply Voltage</b>		
	100 - 240 V AC ±10%, 50/60 Hz	
<b>Power Consumption (220 - 240V)</b>		
Laser Diode ON (Normal / Extended)	366W / 262W	
Standby (Network / Energy Saving)	2.0W / 0.5 W	
<b>Dimension Excluding Feet (D X W X H)</b>		
	375 x 458 x 209.5 mm	
<b>Weight</b>		
	Approx. 9.4 kg (Without Cable Cover) / Approx. 9.7 kg (With Cable Cover)	
<b>Fan Noise (Normal / Quiet)</b>		
	36dB / 27dB	

<sup>1</sup> Colour brightness (colour light output) and white brightness (white light output) will vary depending on usage conditions. Colour light output measured in accordance with IDMS 15:4; white light output measured in accordance with ISO 21118.  
<sup>2</sup> Maximum speed and range is achievable when used with same enhanced mode technology. Actual data rates, features and performance may vary depending on your computer system, the environment and other factors.  
<sup>3</sup> When used in the general office environment (the amount of floating dust: 0.04 - 0.2 mg/m<sup>3</sup>). Based on the Epson's in-house test results.  
<sup>^</sup> Pixel shifting technology achieves Full HD resolution on screen.  
\* Including Firmware Update and Copy OSD Settings.



**Supplied Accessories**

- Power Cable: 1.8m x 1
- Remote Control with 2xAA Battery
- Cable cover
- Foot for main unit
- Lens cap

**Optional Accessories**

- Setting Plate: ELPMB62
- Air Filter: ELPAF56
- Wireless LAN unit: ELPAP11

EB-800F (Colour: White)



EB-805F (Colour: Black)



©2020 Epson Singapore Pte Ltd. All Rights Reserved. Reproduction in part or in whole, without the written permission from Epson, is strictly prohibited.

EPSON and EXCEED YOUR VISION are registered trademarks of Seiko Epson Corporation.

All other product names and other company names used herein are for identification purposes only and are the trademarks or registered trademarks of their respective owners.

Epson disclaims any and all rights in those marks. Projected images shown herein are simulations. The actual product design and contents may vary. Specifications are subject to change without notice and may vary between countries. Please check with local Epson offices for more information.

Apple, iPad and iPhone are trademarks of Apple Inc., registered in the U.S. and other countries. App Store is a service mark of Apple Inc.

Android is a trademark of Google Inc.

Dealer's Stamp

Information correct at time of printing.  
Printed July 2020

**ULTRA-SHORT THROW**  
**LASER PROJECTORS**  
**EB-800F/805F**



Wow your customers and strengthen marketing messages with Epson EB-800F/805F Full HD ultra-short throw laser projectors! Create stunning video content easily and instantly project your information wirelessly to your audience. EB-800 series projectors' laser light source allows it to be placed in any orientation, even in tight spaces, and are the ideal companion for your digital signage needs.

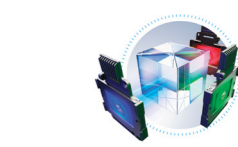
- Full HD<sup>1</sup> Resolution
- Ultra-short Throw 130" @80.3cm
- Multi-PC Projection
- 5,000 Lumens
- PC free USB Memory
- Flexible Installation
- Maintenance Free



EB-800F



EB-805F



**IT'S IN THE DETAILS.**

3LCD technology that delivers quality projected images and reliable performance.

**Captivating Projections**

Send crisp and clear messages through vivid pictures thanks to the Full HD resolution that gives clarity down to the tiniest details.

**Affordable & Low Maintenance**

Total peace-of-mind with 20,000 hours of maintenance-free projections thanks to the laser light source.

**Flexible Placement**

Designed especially to fit tight retail spaces, the projector can rotate 360° without compromising image brightness and clearness.

<sup>1</sup> Pixel shifting technology achieves Full HD resolution on screen.  
<sup>2</sup> Color brightness(color light output) in brightest mode, measured by a third-party lab in accordance with IDMS 15.4. Color brightness will vary depending on usage conditions. Top-selling Epson 3LCD projectors versus top-selling 1-chip DLP<sup>®</sup> projectors based on NPD sales data for May 2017 – April 2018.

**Sales Enquiries**  
**800 120 5564**

EpsonSEA  
For latest specifications, visit [www.epson.com.sg/projectors](http://www.epson.com.sg/projectors) or call **800 120 5564**.

**Epson Singapore Pte Ltd** 438B Alexandra Road, Block B Alexandra Technopark, #04-01/04, Singapore 119968. Tel: (65) 6586-5500  
**Epson Customer Care Center** 100G Pasir Panjang Road, #01-09 Interlocal Centre, Singapore 118523. Epson Helpdesk: 800 120 5564. Please refer to [www.epson.com.sg/contact](http://www.epson.com.sg/contact) for opening hours.

# MAGNIFY YOUR SPACE WITH VIVID FULL HD PROJECTIONS

## REMARKABLE IMAGE QUALITY

With an optimum brightness of 5,000 lumens and dynamic contrast of over 2,500,000:1, be assured that your images will be vivid and attention-grabbing even under a variety of ambient lightings. The ultra-short-throw laser projector is able to project beautiful and sharp images even in the tightest retail spaces up to a maximum of 130-inch.

## MULTI-DIRECTIONAL PROJECTION

Thanks to its laser light source, EB-800 series projectors can rotate 360° in any direction — horizontally, vertically and rotationally — without any loss in image brightness and quality. An ideal companion to businesses that require vivid projections on a variety of surfaces such as floors and ceilings.

## EPSON CONTENT MANAGER

Create eye-catching projection playlists and add your own images and videos, custom shape filters, and overlay effects with the Epson Content Manager. Playlists saved on an external storage device can be inserted directly to the projector without using any additional cable connection. Scheduling for your projections can also be done fuss-free over the app.

## DO-IT-YOURSELF CONTENT

Create video and image content with Epson's intuitive mobile projection apps and Creative Projection app\*. With over 40 high-quality templates to choose from, customise stunning and creative content effortlessly and project them wirelessly to capture your audience's attention.

\*Creative Projection app is currently available on iOS only.



- Create a welcoming storefront
- Provide a deeper story behind the products
- Customise your brand's promotional information



- Enhance the dining experience
- Easy updating of virtual menus



- Display changes to match ever-changing trends
- Boost customer engagement
- Captivate your target audience



- Enrich customers' experience with informative signage
- Create an insta-worthy atmosphere and be the next cafe to go viral

Captivate your customers with Epson EB-800 series projectors. Enhance the customer experience by creating impressive video content. Reach beyond the traditional means of information sharing through digital signage projections that can be changed according to your needs. Dazzling and engaging storefront displays create a talking point amongst your customers, achieving maximum exposure for your brand.

## SLEEK, ADAPTIVE AND VISUALLY EXCEPTIONAL



Combining illumination with projection, the Epson EB-800F/805F projector transforms any surface into customisable digital marketing spaces, enticing your customers and strengthening your brand's messages to them. Utilise the animated displays to provide a deeper story to your audience, and ultimately enticing and convincing them to make that purchase.

### HIGH CONTRAST RATIO

Come equipped with high contrast ratio, the new Epson EB-800 series projectors have an optimum brightness of 5,000 lumens, promising crisp and vivid projections that are bound to capture attention. With a dynamic contrast of over 2,500,000:1, you can be sure to wow and entice customers through the exceptional Full HD visual experience even in spaces with bright ambient lights.

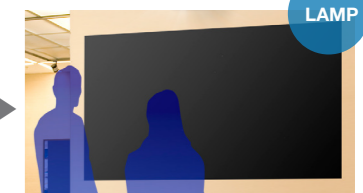


Contrast Ratio  
Over 2,500,000:1

### WORRY-FREE PROJECTION

With multiple laser diodes to rely on, the screen won't go black even if one diode goes out. This eliminates the worry of the projector light burning out while displaying your advertisements.

#### LASER VS LAMP



The projector keeps working even when one light diode goes out.

The screen goes black when the lamp burns out.

## DIY THE CUSTOMER EXPERIENCE BE ORIGINAL, BE MEMORABLE



Create memorable stories in a few simple steps and retain the top-of-mind brand awareness among your customers. Design personalised in-store messages or video content and instantly project them from your Epson EB-800F/805F projectors. Have the reins to create them from scratch, edit from existing templates or simply add in personalised messages into your content through the app.

### CREATIVE PROJECTION APP

Create impressive custom content on the iPhone or iPad easily with the Epson Creative Projection\* app. Beautify any space by combining your photos and videos with the app's built-in templates and stamps. With the Epson Creative Projection, you can now create original, dazzling content to enliven rooms, product displays, and spaces around you, anytime and anywhere.



#### How to create content using Creative Projection App:



#### Set up your projector.

Insert a USB memory into the projector and connect the projector to a network.



#### Select a template and edit your content.

Select a built-in template that fits your vision of the content you want to create. You can customize your content by adding text, stamps, and effects.



#### Preview content on the projector.

Connecting your iPhone or iPad and projector enables you to edit content on your iPhone or iPad while projecting a preview. You can easily connect your device by reading a QR code displayed on the projected image.

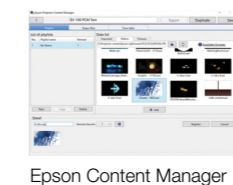
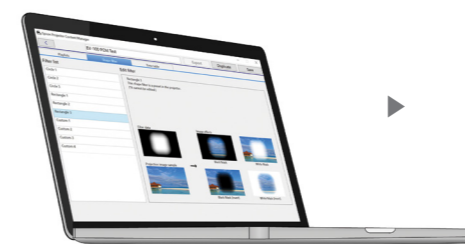


#### Save and playback contents.

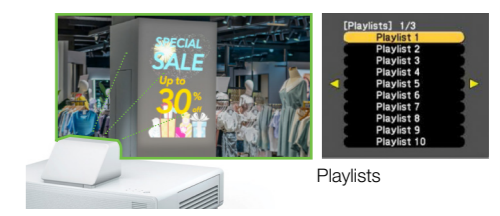
After you finish editing your content, save the file to the USB memory that you inserted in the projector. You can play the content that you save from the projector even if you do not have your device with you.

### PROJECTOR CONTENT MANAGER

The Epson Projector Content Manager software allows you to add images and movies to playlists, and save them on a USB memory device. Now, you can easily project your playlist without needing an external device. You can also use a variety of playlist control functions to schedule playlists, add effects, or do simultaneous playback.



Epson Content Manager



Playlists

## OUTSTANDING FLEXIBILITY

### 360° PROJECTION

The EB-800F/805F with laser light source can be rotated 360° in any direction — horizontally, vertically and rotationally — without any loss in image brightness. This makes it ideal for a wide range of applications, such as projecting onto ceilings and floors. Furthermore, the newly supported portrait projection allows for more installation flexibilities.



### DIGITAL SIGNAGE WITHOUT PC

Project contents on walls, ceilings and floors without needing to connect to a PC. Simply insert the USB stick that has your content into the projector and it is ready to be projected. Whether it is images or videos, the EB-800 series makes it easy and convenient.



### QUICK START-UP TIME

Equipped with laser light technology, the EB-800 series starts up within 5 seconds, ensuring smooth and timely displays. Fast and efficient, your advertisements are always ready for display at a moment's notice. more installation flexibilities.



### PERFECT FOR SMALL SPACES

With the ultra-short throw capability, it is now possible to project a large-screen within the narrow space of retail windows. You can now create captivating window displays with the help of large projections to increase the visibility of store merchandise.



## ABSOLUTE PEACE-OF-MIND

### EPSON PROJECTOR MANAGEMENT

With Epson's network monitoring and control software, you can see from a single PC which projectors are available and whether they are running efficiently – even across the biggest network. You can configure your projectors and access their serial numbers remotely, as well as receive instant email alerts for pre-defined critical indicators such as non-functioning devices or overheating laser diode.

Now you can send messages or announcements as JPEG files or text simultaneously to any number of projectors on a network. This makes the EB-800F/805F projector series very useful for immediate communication needs or even emergencies.

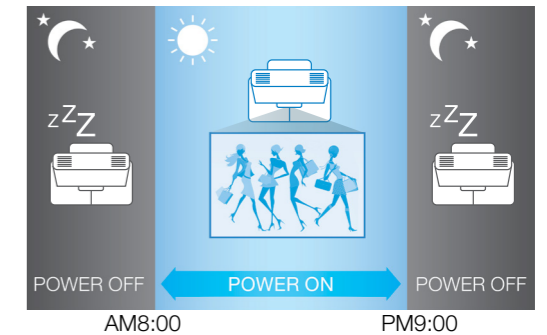


### WEB CONTROL

By connecting your projector to a network, you can adjust your projector installation entries from a PC or smart device.

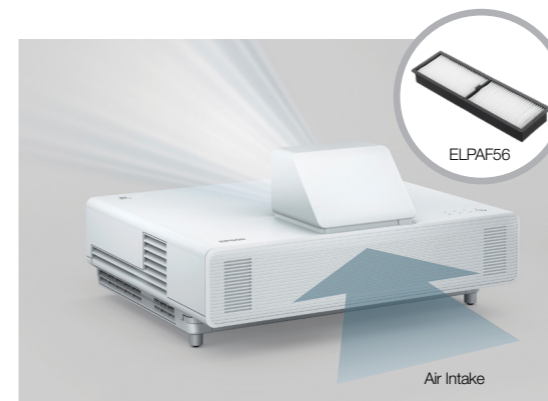
### SCHEDULING FUNCTION

The EB-800 series can run programs as scheduled with a built-in clock. You can set the times for turning projectors on and off daily as necessary.



### DUST RESISTANCE WITH STRONG FILTER

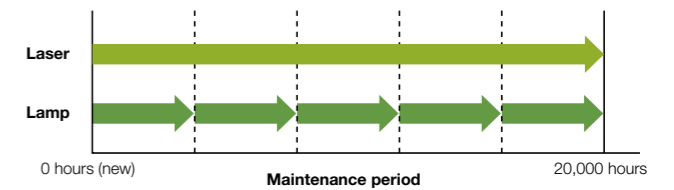
A revolutionary high-performance filter and an improved dustproof structure help minimise dust from entering the optical engine. Thanks to this clever dust-resistant design, it enables higher brightness that can last longer compared to conventional models. The airflow is also optimised such that the unclean air does not blow directly into the optical engine.



### COST EFFECTIVE

Engineered with inorganic LCD panels and an inorganic phosphor wheel. The newly designed laser light source delivers 20,000 hours\* of maintenance-free for the laser light source.

And with the advanced electrostatic filter having an equally long-lasting life, you enjoy peace of mind in using these highly reliable laser projectors.



\* 20,000H life for Laser light source : Approximate time until brightness decreases 50% from first usage. Measured by acceleration test assuming use of 0.04 - 0.20 mg/m<sup>3</sup> of particulate matter. Time varies depending on usage conditions and environments. Replacement of parts other than the light source may be required in a shorter period.



ECO FRIENDLY  
PRODUCT  
BY EPSON

## VERSATILITY WITH WHITE OR BLACK FOR SPACE'S AESTHETICS

Available in white and black, the compact and sleek Epson EB-800F/805F projectors add value to your space's aesthetics. The stylish projector aims to complement your interior's style, bringing a sense of modernness into the space.



## PROJECTOR WISHES COME TRUE.

**TRUE  
COLOURS**

Brighter, vivid projection from Epson.

9<sup>out of 10</sup> PEOPLE  
PREFER  
IMAGES FROM  
**EPSON**  
PROJECTORS

### EPSON 3LCD PROJECTORS

### 1-CHIP PROJECTORS



Up to **3x**  
Brighter  
Colours  
with  
Epson Projectors\*

**TRUE  
BRIGHTNESS**



☀️  **WHITE 3000 LUMENS**  
🌈  **COLOUR 3000 LUMENS**

☀️  **WHITE 3000 LUMENS**  
🌈  **COLOUR 430 LUMENS\*\***



**NO  
RAINBOW  
EFFECT**

**TRUE  
COMFORT**



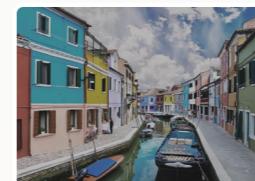
🔊 ➡️ **PRISM**  
**LIGHT SOURCE**

🔊 ➡️ **ROTATING  
COLOUR WHEEL**  
**LIGHT SOURCE**



UP TO **6x**  
**WIDER  
COLOUR  
GAMUT\***  
Epson Projectors

**TRUE  
REALISM**



**WIDER  
COLOUR  
RANGE**

**SMALLER  
COLOUR  
RANGE**



Find out more at [www.epson.com.sg/truecolours](http://www.epson.com.sg/truecolours)



**IT'S IN THE DETAILS.**

With 3LCD panels, every projection gives you spectacular true colours.

\* Leading Epson business and education projectors vs. leading 1-chip DLP® projectors, selected according to NPD data as of July 2015. Based on U.S. research conducted by Radius Research.  
\*\* These lumen statistic can be found at [www.colorlightoutput.com](http://www.colorlightoutput.com).  
1 Color brightness(color light output) in brightest mode, measured by a third-party lab in accordance with IDMS 15.4. Color brightness will vary depending on usage conditions. Top-selling Epson 3LCD projectors versus top-selling 1-chip DLP® projectors based on NPD sales data for May 2017 - April 2018.  
2 Gamut volume in brightest mode, measured by a third-party lab in 3D in the CIE L\*a\*b\* coordinate space. Top-selling Epson 3LCD projectors versus top-selling 1-chip DLP® projectors based on NPD sales data for May 2017 - April 2018.